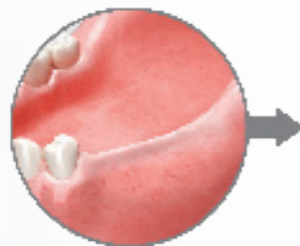
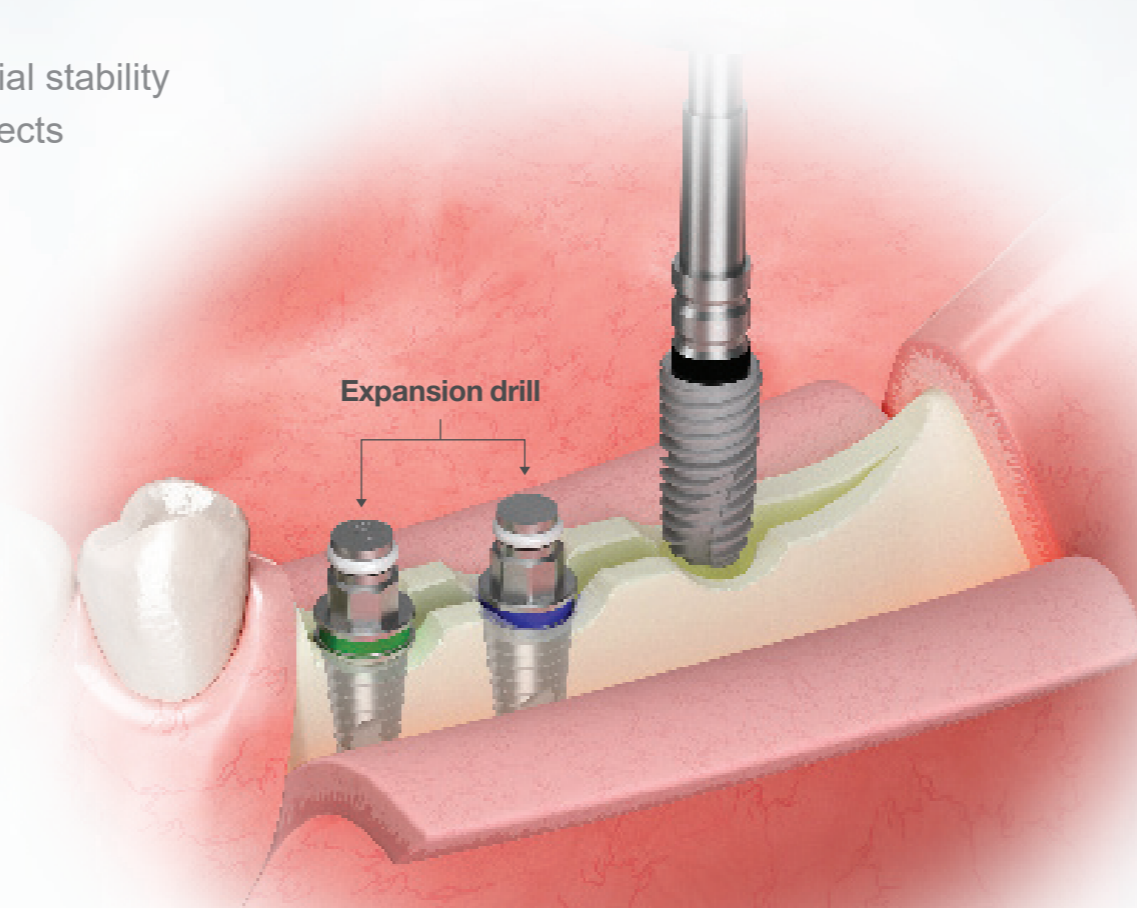


# Esset KIT

- Eliminate Buccal Plate Fractures
- Ridge Split without Mallet
- Immediate loading possible: Secure high initial stability
- Healing periods reduced, even for 4 wall defects
- Place 4.0 and 5.0 Fixtures in narrow ridges  
(Note: this kit is not designed for 5.0 fixtures)

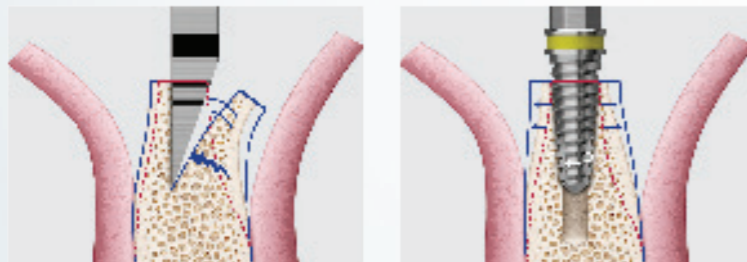


Narrow Ridge



## Buccal Plate and Ridge Expansion Ridge

- Using self tapping expansion drills after split will expand ridge without fracture.
- Utilize elasticity of bone for high initial stability.

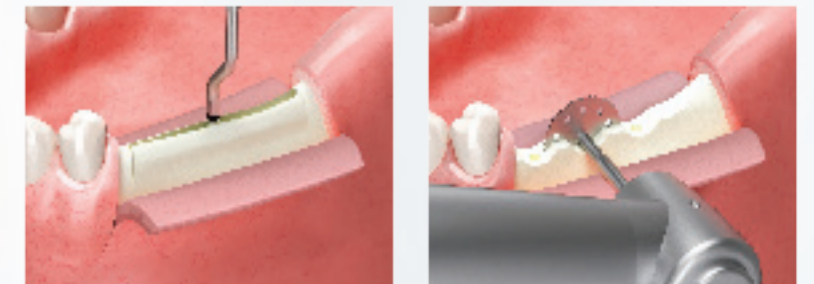


Ridge Split Kit

ESSET KIT

## Ridge Split without Malleting

- Malleting causes patient discomfort.



Ridge Split Kit

ESSET KIT

## Placement without over torquing

- Placing fixtures into sites after using Expansion Drill will prevent over-torquing.



## Surgical Sequence



**Crest Remover:** Contour Ridge and create Grooves for implant sites.



Initial Drilling to define fixture positioning.



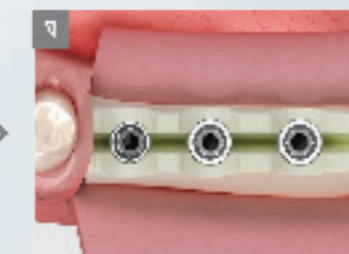
Saw to incise and split ridge.



Expansion drill to expand ridge.



Fixture placement into expanded ridge.



Complete placement.



Suture and complete procedure.